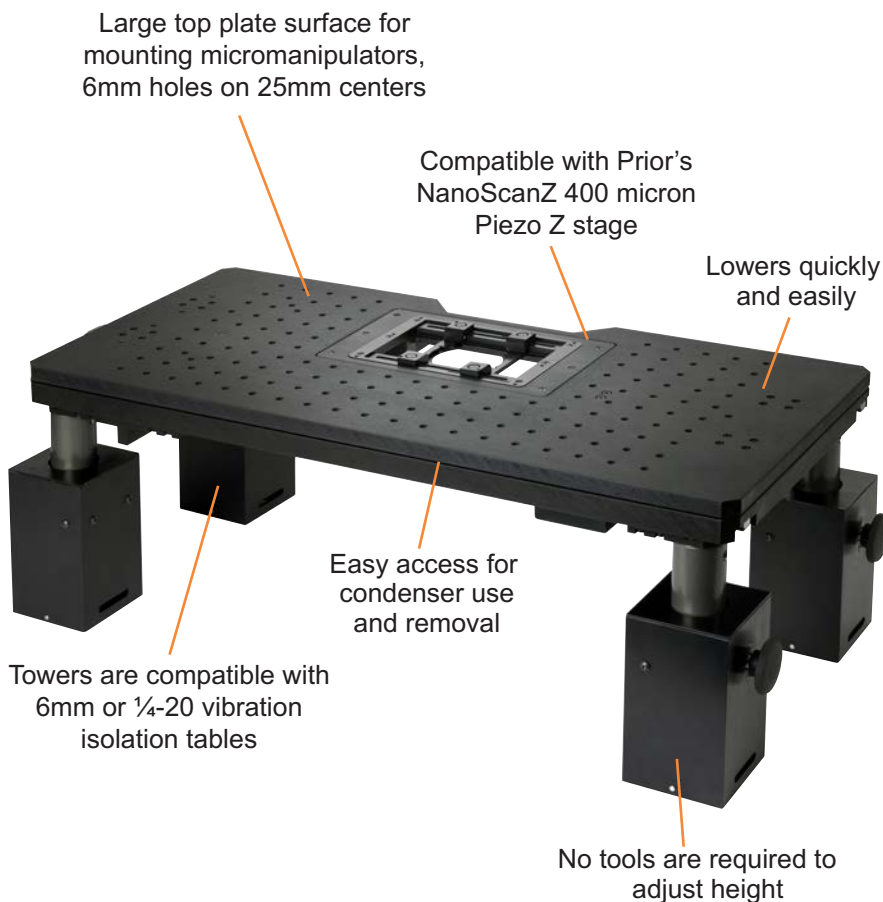


## Motorized ZDeck Quick Adjust Platform System

For Nikon FN1/Ni, Olympus BX51WI/BX61WI and Zeiss Axio Examiner Microscopes



Prior Scientific's patent pending ZDeck Quick Adjust Platform enables users to increase their productivity by allowing them to image multiple areas of interest with speed and precision.

### ZDeck Quick Adjust Platform features:

- Pneumatic piston towers which make raising and lowering the ZDeck virtually effortless.
- No tools are required to adjust the height.
- Change between thin sample and whole animal imaging height in seconds.
- ProScan™III controller and PS3J100 joystick provide ultra fine XY stage control via dual digipots.
- A completely integrated XY stage which provides a lower profile with a thinner cross section allowing for large samples.
- Oversized top surface for mounting additional micromanipulators and stereotaxic instruments.
- Fully encoder upgradable.
- Large sample area for mounting existing, heating, cooling, perfusion and incubation chambers.
- Compatible with most imaging software.

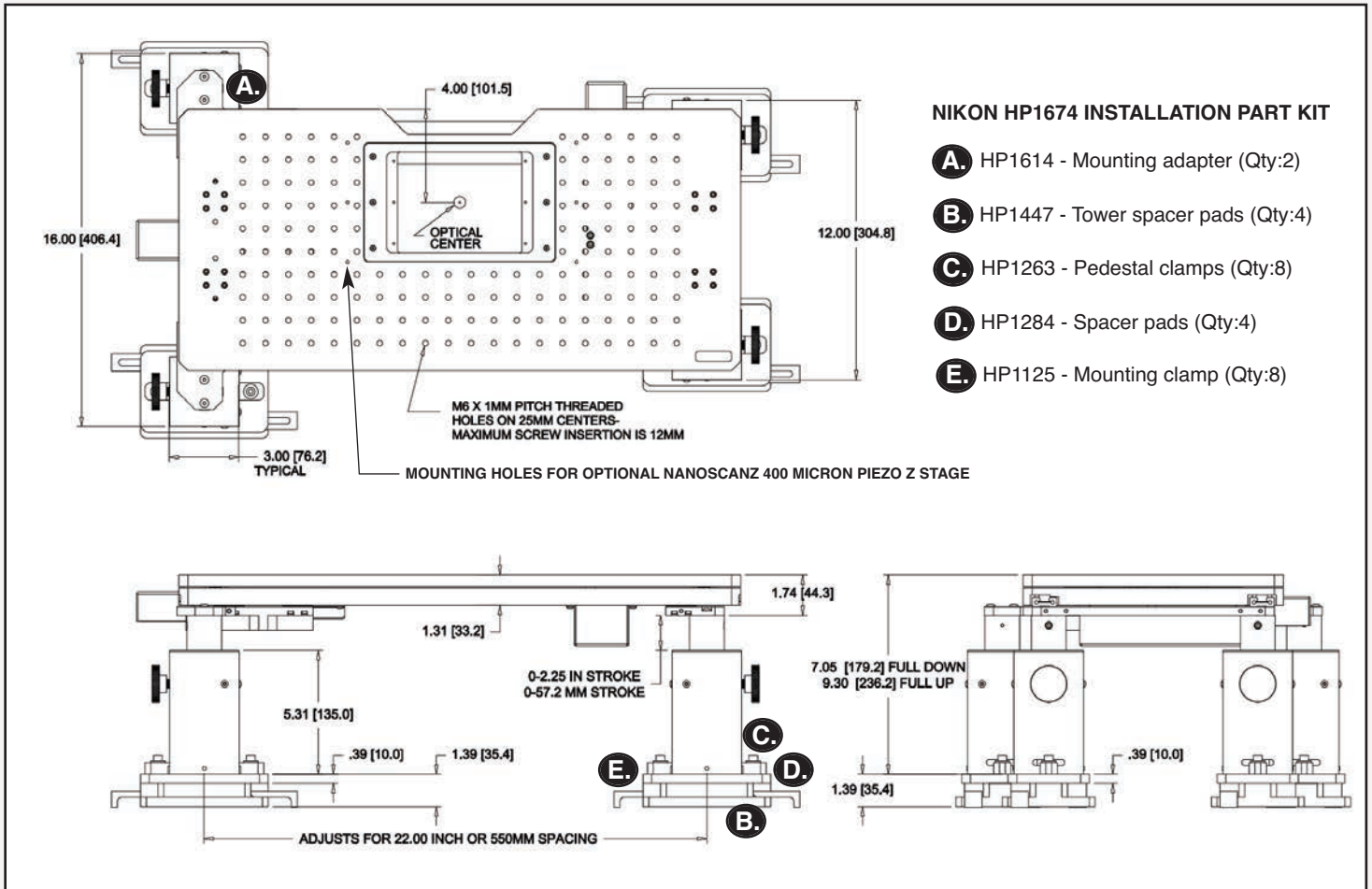
### Features:

- Image multiple areas of interest with speed and precision
- Lowers quickly & easily to provide access for loading and unloading samples
- No tools are required to adjust height
- Changing between thin sample and whole animal imaging can be accomplished in seconds
- Pneumatic pistons make raising and lowering the unit effortless
- Provides sub micron repeatability and smooth movement
- Compatible with 6mm or 1/4-20 vibration isolation tables
- Compatible with Prior NanoScanZ Piezo Z stages
- Pillar spaces allow for Koehler illumination at a range of focus heights
- Optional encoders for highest precision available
- Compatible with multi-photon setup configurations

# Motorized ZDeck Quick Adjust Platform System

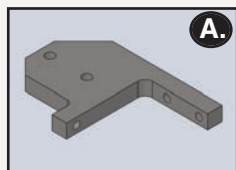
For Nikon FN1/Ni Microscopes

## Outline Drawing and Part Number Information

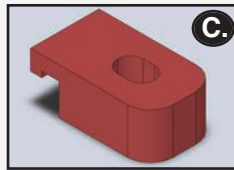


### NIKON HP1674 INSTALLATION PART KIT

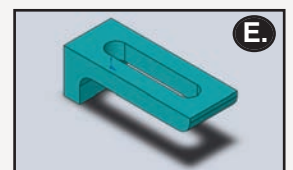
- A.** HP1614 - Mounting adapter (Qty:2)
- B.** HP1447 - Tower spacer pads (Qty:4)
- C.** HP1263 - Pedestal clamps (Qty:8)
- D.** HP1284 - Spacer pads (Qty:4)
- E.** HP1125 - Mounting clamp (Qty:8)



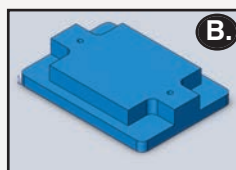
**A. Mounting Adapter**  
Part Number: HP1614  
Quantity: 2



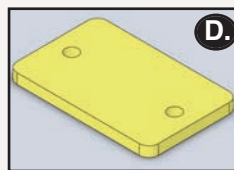
**C. Pedestal Clamps**  
Part Number: HP1263  
Quantity: 8



**Mounting Clamps**  
Part Number: HP1125  
Quantity: 8



**B. Tower Spacer Pad**  
Part Number: HP1447  
Quantity: 4



**D. Spacer Pads**  
Part Number: HP1284  
Quantity: 4



Worldwide distribution



Prior Scientific Ltd  
Cambridge, UK

T. +44 (0) 1223 881711  
E. [uksales@prior.com](mailto:uksales@prior.com)

Prior Scientific Inc  
Rockland, MA, USA

T. +1 781-878-8442  
E. [info@prior.com](mailto:info@prior.com)

Prior Scientific GmbH  
Jena, Germany

T. +49 (0) 3641 675 650  
E. [jena@prior.com](mailto:jena@prior.com)

Prior Scientific KK  
Tokyo, Japan

T. +81-3-5652-8831  
E. [info-japan@prior.com](mailto:info-japan@prior.com)

## Motorized ZDeck Quick Adjust Platform System

For Nikon FN1/Ni Microscopes

### Specifications

| Part Number                    | Description  |
|--------------------------------|--|
| ZDeck travel                   | 50mm   |
| Vibration table compatibility  | 1/4-20 or 6mm  |
| XY travel                      | 68mm x 68mm  |
| XY resolution                  | 20 nanometers  |
| XY Speed                       | 15mm/sec   |
| Spacers provided               | Four pillar spacers, four one inch spacers                         |
| ProScan controller power       | Universal external power supply. Input 100-240V, 50/60Hz, Max 1.6A |
| ProScan computer interface     | RS232/USB  |
| ProScan communication protocol | 8 bit word, 1 stop bit, no parity, no handshake                    |

### Adjustable Rise Platform Hardware Kit

| Quantity | Description              |
|----------|--------------------------|
| 8        | 1/4x20x1.5" screw        |
| 10       | 1/4x20x1.0" screw        |
| 1        | 3/16" allen wrench       |
| 8        | .75mm thick M5 washer    |
| 1        | 5mm hex wrench           |
| 1        | 3mm allen wrench         |
| 10       | 1/4 standard flat washer |
| 8        | M4 x 10 screw            |
| 4        | M4 x 30 screw            |
| 8        | M5 x 14 screw            |
| 10       | M6 x 25 screw            |
| 8        | M6 x 35 screw            |

### ZDN12MN Complete System Part List

| Part Number | Description                  |
|-------------|------------------------------|
| ZDM1M2      | Motorized ZDeck stage        |
| HP1266      | Hardware installation kit    |
| HP1674      | Nikon installation parts kit |
| H31XYZEF    | ProScan controller           |
| PS3J100     | ProScan joystick             |
| H473UP      | Universal specimen holder    |
| H230        | Solid aluminum plate         |

### Ordering Information

| Part Number                     | Description  |
|---------------------------------|--|
| <b>ZDN12MN for Nikon FN1/Ni</b> | Prior high precision motorized ZDeck system complete with Prior ZDeck, motorized ProScan XY stage, ProScan III controller, PS3J100 joystick with dual digipot controls, universal holder, solid aluminum plate and pillar spacers.                                 |
| <b>ZDN12ME for Nikon FN1/Ni</b> | Prior high precision motorized ZDeck system complete with Prior ZDeck, motorized ProScan XY stage with 50 nanometer linear scales, ProScan III controller, PS3J100 joystick with dual digipot controls, universal holder, solid aluminum plate and pillar spacers. |

**PRIOR**  
Scientific

Worldwide distribution



**Prior Scientific Ltd**  
Cambridge, UK

T. +44 (0) 1223 881711  
E. uksales@prior.com

**Prior Scientific Inc**  
Rockland, MA, USA

T. +1 781-878-8442  
E. info@prior.com

**Prior Scientific GmbH**  
Jena, Germany

T. +49 (0) 3641 675 650  
E. jena@prior.com

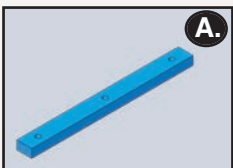
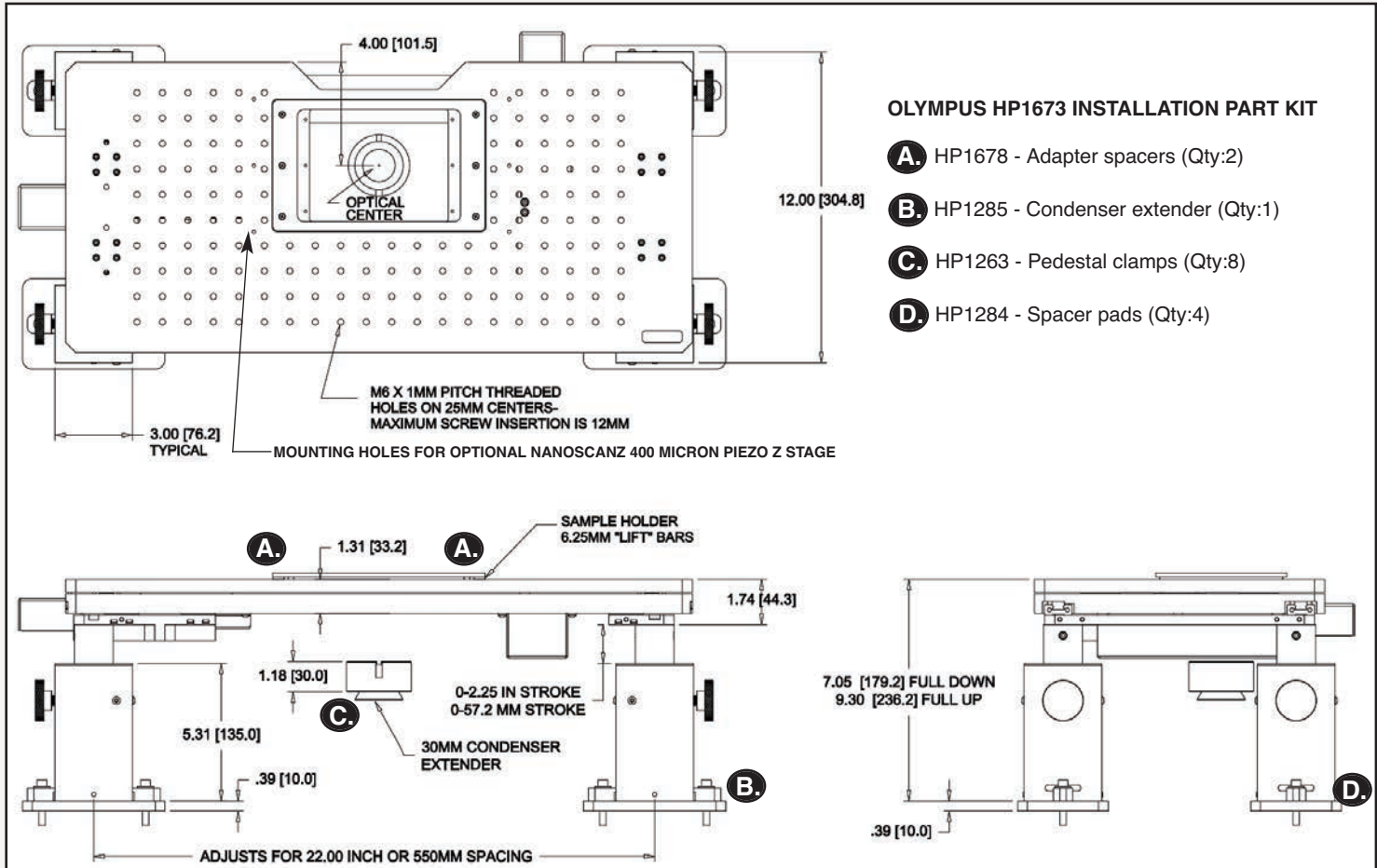
**Prior Scientific KK**  
Tokyo, Japan

T. +81-3-5652-8831  
E. info-japan@prior.com

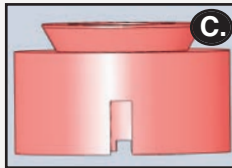
## Motorized ZDeck Quick Adjust Platform System

For Olympus BX51WI/BX61WI Microscopes

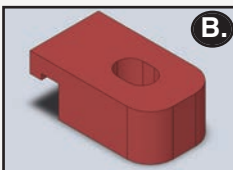
### Outline Drawing and Part Number Information



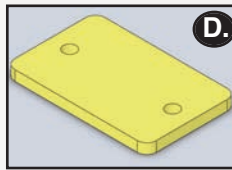
**A. Adapter Spacers**  
Part Number: HP1678  
Quantity: 2



**C. Condenser Extender**  
Part Number: HP1285  
Quantity: 1



**B. Pedestal Clamps**  
Part Number: HP1263  
Quantity: 8



**D. Spacer Pads**  
Part Number: HP1284  
Quantity: 4

**PRIOR**  
Scientific

Worldwide distribution



Prior Scientific Ltd  
Cambridge, UK

T. +44 (0) 1223 881711  
E. uksales@prior.com

Prior Scientific Inc  
Rockland, MA, USA

T. +1 781-878-8442  
E. info@prior.com

Prior Scientific GmbH  
Jena, Germany

T. +49 (0) 3641 675 650  
E. jena@prior.com

Prior Scientific KK  
Tokyo, Japan

T. +81-3-5652-8831  
E. info-japan@prior.com

## Motorized ZDeck Quick Adjust Platform System

For Olympus BX51WI/BX61WI Microscopes

### Specifications

| Part Number                    | Description  |
|--------------------------------|--|
| ZDeck travel                   | 50mm   |
| Vibration table compatibility  | 1/4-20 or 6mm  |
| XY travel                      | 68mm x 68mm  |
| XY resolution                  | 20 nanometers  |
| XY Speed                       | 15mm/sec   |
| Spacers provided               | One condenser, four pillar spacers, two adapter spacers            |
| ProScan controller power       | Universal external power supply. Input 100-240V, 50/60Hz, Max 1.6A |
| ProScan computer interface     | RS232/USB  |
| ProScan communication protocol | 8 bit word, 1 stop bit, no parity, no handshake                    |

### Adjustable Rise Platform Hardware Kit

| Quantity | Description              |
|----------|--------------------------|
| 8        | 1/4x20x1.5" screw        |
| 10       | 1/4x20x1.0" screw        |
| 1        | 3/16" allen wrench       |
| 8        | .75mm thick M5 washer    |
| 1        | 5mm hex wrench           |
| 1        | 3mm allen wrench         |
| 10       | 1/4 standard flat washer |
| 8        | M4 x 10 screw            |
| 4        | M4 x 30 screw            |
| 8        | M5 x 14 screw            |
| 10       | M6 x 25 screw            |
| 8        | M6 x 35 screw            |

### ZDP12MN Complete System Part List

| Part Number | Description                    |
|-------------|--------------------------------|
| ZDM1M2      | Motorized ZDeck stage          |
| HP1266      | Hardware installation kit      |
| HP1673      | Olympus installation parts kit |
| H31XYZEF    | ProScan controller             |
| PS3J100     | ProScan joystick               |
| H473UP      | Universal specimen holder      |
| H230        | Solid aluminum plate           |

### Ordering Information

| Part Number                            | Description  |
|--|--|
| <b>ZDP12MN for Olympus BX51WI/61WI</b> | Prior high precision motorized ZDeck system complete with Prior ZDeck, motorized ProScan XY stage, ProScan III controller, PS3J100 joystick with dual digipot controls, universal holder, solid aluminum plate, condenser spacer and four 10mm pillar spacers.                                 |
| <b>ZDP12ME for Olympus BX51WI/61WI</b> | Prior high precision motorized ZDeck system complete with Prior ZDeck, motorized ProScan XY stage with 50 nanometer linear scales, ProScan III controller, PS3J100 joystick with dual digipot controls, universal holder, solid aluminum plate, condenser spacer and four 10mm pillar spacers. |

**PRIOR**  
Scientific

Worldwide distribution



**Prior Scientific Ltd**  
Cambridge, UK

T. +44 (0) 1223 881711  
E. uksales@prior.com

**Prior Scientific Inc**  
Rockland, MA, USA

T. +1 781-878-8442  
E. info@prior.com

**Prior Scientific GmbH**  
Jena, Germany

T. +49 (0) 3641 675 650  
E. jena@prior.com

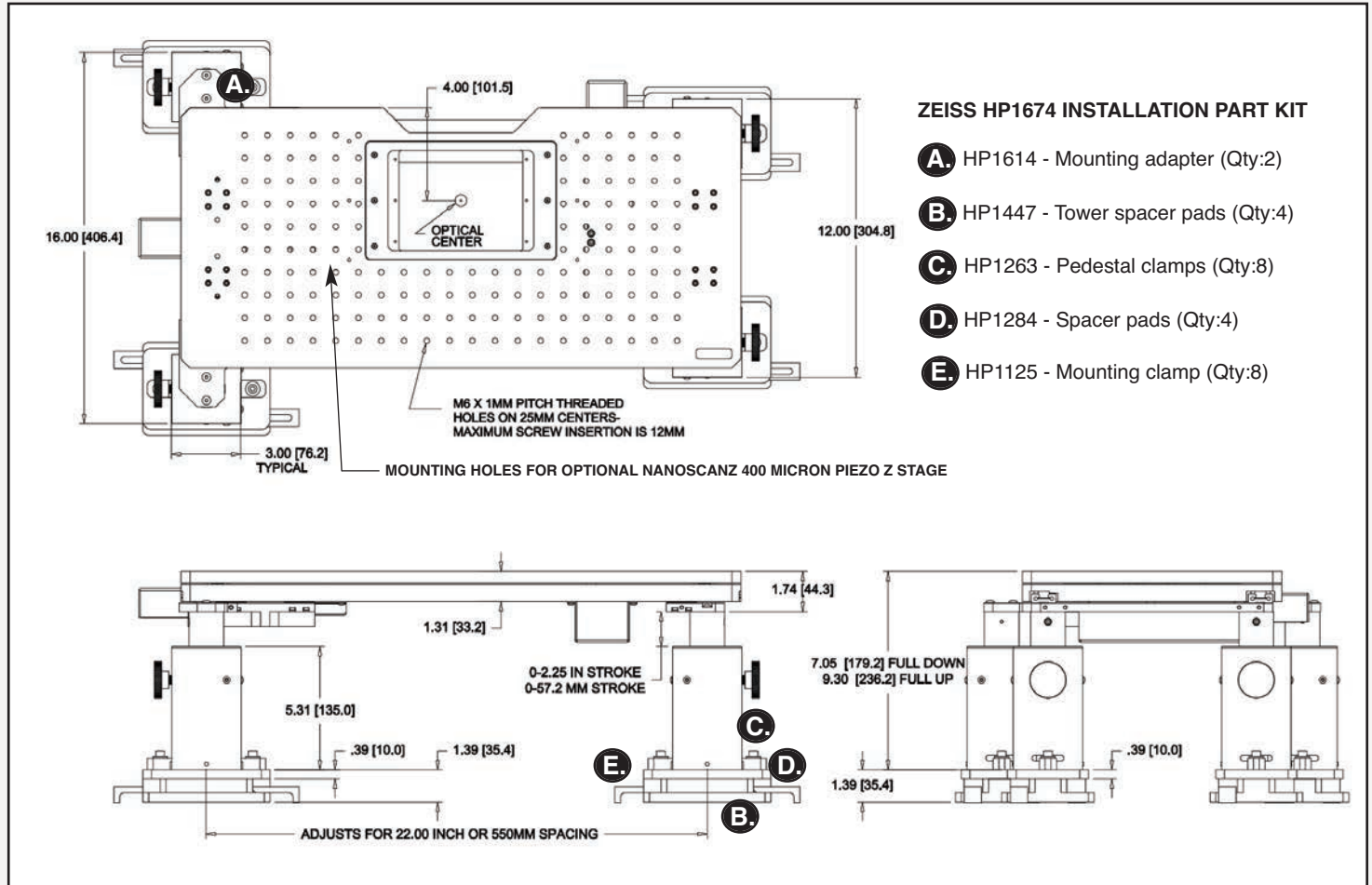
**Prior Scientific KK**  
Tokyo, Japan

T. +81-3-5652-8831  
E. info-japan@prior.com



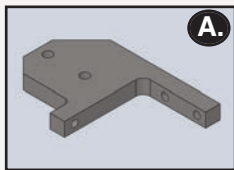
**Motorized ZDeck Quick Adjust Platform System**  
For Zeiss Axio Examiner Microscopes

**Outline Drawing and Part Number Information**

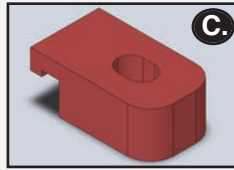


**ZEISS HP1674 INSTALLATION PART KIT**

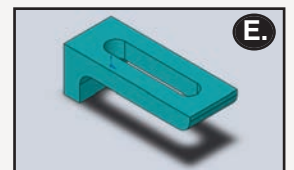
- A.** HP1614 - Mounting adapter (Qty:2)
- B.** HP1447 - Tower spacer pads (Qty:4)
- C.** HP1263 - Pedestal clamps (Qty:8)
- D.** HP1284 - Spacer pads (Qty:4)
- E.** HP1125 - Mounting clamp (Qty:8)



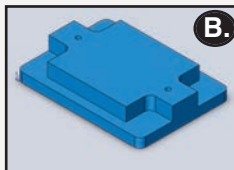
**A. Mounting Adapter**  
Part Number: HP1614  
Quantity: 2



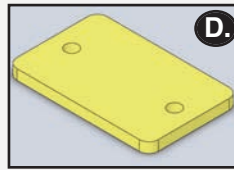
**C. Pedestal Clamps**  
Part Number: HP1263  
Quantity: 8



**Mounting Clamps**  
Part Number: HP1125  
Quantity: 8



**B. Tower Spacer Pad**  
Part Number: HP1447  
Quantity: 4



**D. Spacer Pads**  
Part Number: HP1284  
Quantity: 4



## Motorized ZDeck Quick Adjust Platform System

For Zeiss Axio Examiner Microscopes

### Specifications

| Part Number                    | Description  |
|--------------------------------|--|
| ZDeck travel                   | 50mm   |
| Vibration table compatibility  | 1/4-20 or 6mm  |
| XY travel                      | 68mm x 68mm  |
| XY resolution                  | 20 nanometers  |
| XY Speed                       | 15mm/sec   |
| Spacers provided               | Four 10mm pillar spacers, four one inch spacers                    |
| ProScan controller power       | Universal external power supply. Input 100-240V, 50/60Hz, Max 1.6A |
| ProScan computer interface     | RS232/USB  |
| ProScan communication protocol | 8 bit word, 1 stop bit, no parity, no handshake                    |

### Adjustable Rise Platform Hardware Kit

| Quantity | Description              |
|----------|--------------------------|
| 8        | 1/4x20x1.5" screw        |
| 10       | 1/4x20x1.0" screw        |
| 1        | 3/16" allen wrench       |
| 8        | .75mm thick M5 washer    |
| 1        | 5mm hex wrench           |
| 1        | 3mm allen wrench         |
| 10       | 1/4 standard flat washer |
| 8        | M4 x 10 screw            |
| 4        | M4 x 30 screw            |
| 8        | M5 x 14 screw            |
| 10       | M6 x 25 screw            |
| 8        | M6 x 35 screw            |

### ZDZ12MN Complete System Part List

| Part Number | Description                  |
|-------------|------------------------------|
| ZDM1M2      | Motorized ZDeck stage        |
| HP1266      | Hardware installation kit    |
| HP1674      | Zeiss installation parts kit |
| H31XYZEF    | ProScan controller           |
| PS3J100     | ProScan joystick             |
| H473UP      | Universal specimen holder    |
| H230        | Solid aluminum plate         |

### Ordering Information

| Part Number                            | Description  |
|--|--|
| <b>ZDZ12MN for Zeiss Axio Examiner</b> | Prior high precision motorized ZDeck system complete with Prior ZDeck, motorized ProScan XY stage, ProScan III controller, PS3J100 joystick with dual digipot controls, universal holder, solid aluminum plate and pillar spacers.                                 |
| <b>ZDZ12ME for Zeiss Axio Examiner</b> | Prior high precision motorized ZDeck system complete with Prior ZDeck, motorized ProScan XY stage with 50 nanometer linear scales, ProScan III controller, PS3J100 joystick with dual digipot controls, universal holder, solid aluminum plate and pillar spacers. |

**PRIOR**  
Scientific



### Worldwide distribution

**Prior Scientific Ltd**  
Cambridge, UK

T. +44 (0) 1223 881711  
E. uksales@prior.com

**Prior Scientific Inc**  
Rockland, MA. USA

T. +1 781-878-8442  
E. info@prior.com

**Prior Scientific GmbH**  
Jena, Germany

T. +49 (0) 3641 675 650  
E. jena@prior.com

**Prior Scientific KK**  
Tokyo, Japan

T. +81-3-5652-8831  
E. info-japan@prior.com